

For Villas

Rock vandal resistant panel

Injected aluminium vandal resistant (IK-09) and weatherproof (IP-44) door panels, in grey colour.
Adjustable pan and tilt CCD b/w or color camera with electronic iris and light emitters for night vision.
Electronic call with acoustic acknowledgement signal at the door panel (only SV-805 models).
Dimensions: external: 144(W) x 144(H) mm.
embedded: 131(W) x 131(H) x 45(D) mm.

Two possibilities for installation:

4+'n' (SV-805 models), which allows up to 2 additional T-901 or T-901VD telephones (pag. 65),
2 wires (SV-802 models), which allows the replacement of an existing bell keeping the installation.

Additional monitors are not allowed in both types of installations.

Surface installation monitors.

4" b/w flat tube screen or color TFT LCD of "A Grade" quality.

Potential free contact push button, which allows the activation of auxiliary devices.

Autoswitch-on function (one extra wire is required on SV-805 models).

Lock release is not included on SV/805 models; use 12Va.c. lock releases (pag. 78 and 79).

Door panel accessories are detailed on page 21.


Schematic diagrams and sections chart are shown on page 95.



SV-805/AL

1 way b/w video kit composed of:


11758005

-  PV-395/AL one push button door panel. p. 32
- M embedding box. p. 33
- Platea 5 monitor with wall mounting connector. p. 70
- FA-805 power supply. p. 42

SV-802/AL

1 way b/w video kit composed of:

11758002


-  PV-292/AL one push button door panel. p. 32
- M embedding box. p. 33
- Platea 2 monitor with wall mounting connector. p. 70
- FA-802 power supply. p. 42
- CV-14/DC lock release. p. 79



SV-805/AL Color

1 way color video kit composed of:


11758006

-  PV-395/AL Color one push button door panel. p. 32
- M embedding box. p. 33
- Platea 5 Color monitor with wall mounting connector. p. 70
- FA-805 power supply. p. 42

SV-802/AL Color

1 way color video kit composed of:

11758003

-  PV-292/AL Color one push button door panel. p. 32
- M embedding box. p. 33
- Platea 2 Color monitor with wall mounting connector. p. 70
- FA-802 power supply. p. 42
- CV-14/DC lock release. p. 79

For Villas

With Surf surface panel

Available from 2nd quarter 2006

Surface installation door panel manufactured in aluminium and ABS plastic.
Adjustable pan and tilt CCD b/w camera with electronic iris and light emitters for night vision.
Electronic call.
External dimensions: 99(W) x 185(H) x 35(D) mm.

2 wires installation, which allows the replacement of an existing bell keeping the same installation.

Surface installation monitors.

4" b/w flat tube screen.

Potential free contact push button, which allows the activation of auxiliary devices.

Autoswitch-on function.

Additional monitors are not allowed.

To be used with 12Vd.c. lock release (included in the kit).

Schematic diagrams and sections chart are shown on page 95.



SV-22

1 way b/w video kit composed of:

11756225



PVS-22 one push button door panel.

p. 18

Platea 2 monitor with wall mounting connector.

p. 70

FA-802 power supply.

p. 42

CV-14/DC lock release.

p. 79

PVS-22

B/W video door panel.

11739225



1 push button.

Only for replacement purposes.

Surface installation.

Dimensions: 99(W) x 185(H) x 35(D) mm.

For Villas

With Stadio Plus panel

Extruded aluminium door panel.

Adjustable pan and tilt CCD b/w or color camera with electronic iris and light emitters for night vision.

Easily seen light button.

Acoustic acknowledgement signal at the door panel confirming that the call is in progress or the system is busy.

Switching units are not required for systems with several access door panels.

Dimensions: external: 134(W) x 148(H) mm.

embedded: 125(W) x 140(H) x 56(D) mm.

Two possibilities for digital installations: 3 wires+coaxial cable or 4 wires+twisted pair (/SC models).

Surface installation monitors.

4" b/w flat tube screen or color TFT LCD of "A Grade" quality.

Video spy and autoswitch-on functions.

Intercommunication with other monitors or telephones (only Plus models) in the same apartment.

Activation of auxiliary devices (2nd camera, lights, ...) using a SAR-90 relay unit.

Input for door bell apartment push button that saves the use of a door bell.

Up to 3 units (Platea Uno, Platea Plus, T-740 Uno, T-940 Uno or T-940 Plus) in the same apartment without additional power supplies (pages 71, 72, 63 and 69 respectively).

Lock release is not included on /SC kits; use 12Vd.c. lock releases (pag. 79).

Door panel accessories are detailed on page 21.

Schematic diagrams and sections chart are shown on page 95.



5110/P

1 way b/w video kit composed of:

11785112

- ▲ 1110/AL one push button grille module. p. 47
- EL530 sound module with b/w camera. p. 57
- EL500 microprocessed module. p. 58
- 600/AL closing heads. p. 49
- CE610 embedding box. p. 50
- Platea Plus monitor. p. 72
- RCPL-Plus wall mounting monitor connector. p. 72
- FA-805 power supply. p. 59
- CV-14/DC lock release. p. 79



5110/SC

1 way b/w video kit composed of:

11785116

- ▲ 1110/AL one push button grille module. p. 47
- EL530 sound module with b/w camera. p. 57
- EL560 twisted pair video transmitter. p. 58
- EL500 microprocessed module. p. 58
- 600/AL closing heads. p. 49
- CE610 embedding box. p. 50
- Platea Plus monitor. p. 72
- RCPL-Plus wall mounting monitor connector. p. 72
- EL562 twisted pair video receiver. p. 72
- FA-805 power supply. p. 59
- Does not include lock release.

For Villas

With Stadio Plus panel



5220/P

2 ways b/w video kit composed of:

11785222

- ▲ 1220/AL two push buttons grille module. p. 47
- EL530 sound module with b/w camera. p. 57
- EL500 microprocessed module. p. 58
- 600/AL closing heads. p. 49
- CE610 embedding box. p. 50
- 2 units of Platea Plus monitor. p. 72
- 2 units of RCPL-Plus wall mounting monitor connector. p. 72
- FA-805 power supply. p. 59
- CV-14/DC lock release. p. 79



5220/SC

2 ways b/w video kit composed of:

11785226

- ▲ 1220/AL two push buttons grille module. p. 47
- EL530 sound module with b/w camera. p. 57
- EL560 twisted pair video transmitter. p. 58
- EL500 microprocessed module. p. 58
- 600/AL closing heads. p. 49
- CE610 embedding box. p. 50
- 2 units of Platea Plus monitor. p. 72
- 2 units of RCPL-Plus wall mounting monitor connector. p. 72
- 2 units of EL562 twisted pair video receiver. p. 72
- FA-805 power supply. p. 59
- Does not include lock release.



5110/Color

1 way color video kit composed of:

11785111

- ▲ 1110/AL one push button grille module. p. 47
- EL531 sound module with color camera. p. 57
- EL500 microprocessed module. p. 58
- 600/AL closing heads. p. 49
- CE610 embedding box. p. 50
- Platea Plus Color monitor. p. 72
- RCPL-Plus wall mounting monitor connector. p. 72
- FA-805 power supply. p. 59
- CV-14/DC lock release. p. 79



5110/SC/Color

1 way color video kit composed of:

11785117

- ▲ 1110/AL one push button grille module. p. 47
- EL531 sound module with color camera. p. 57
- EL560 twisted pair video transmitter. p. 58
- EL500 microprocessed module. p. 58
- 600/AL closing heads. p. 49
- CE610 embedding box. p. 50
- Platea Plus Color monitor. p. 72
- RCPL-Plus wall mounting monitor connector. p. 72
- EL562 twisted pair video receiver. p. 72
- FA-805 power supply. p. 59
- Does not include lock release.

For Villas

Accessories

Rock vandal resistant panel

**VIS-295/AL****Rain shield.**

11290499

For embedded panels.

p. 33

MP/AL**Surface box.**

11229509

Embedding box is required.
Dimensions: 144(W) x 144(H) x 45(D) mm.

p. 33

**MP-VIS/AL****Surface box with integrated rain shield.**

11290496

Manufactured in injected aluminium.
Weatherproof and vandal resistant.
Does not use embedding box.
32 mm. depth only.

p. 33

Stadio Plus panel

**711/AL****Rain shield.**

11280711

p. 51

811/AL**Surface box.**

11280811

Dimensions: 150(W) x 160(H) x 61(D) mm.

p. 52

**911/AL****45° surface box.**

11280911

Requires SUP-EL500 bracket.
Dimensions: 140(W) x 151(H) x 140(D) mm.

p. 53

611/AL**Replacement frame.**

11280611

Covers the existing hole from larger panels.
Dimensions: 200(W) x 278(H) mm.

p. 54

**SUP-EL500****Bracket for 45° surface boxes.**

11788950

p. 53

For Buildings

With Stadio Plus panel

Extruded aluminium door panel.

Adjustable pan and tilt CCD b/w or color camera with electronic iris and light emitters for night vision.

Easily seen light button.

Acoustic acknowledgement signal at the door panel confirming that the call is in progress or the system is busy.

Privacy on audio, video and door open progresses.

Switching units are not required for systems with several access door panels.

Dimensions: external: 134(W) x 228(H) mm.

embedded: 125(W) x 220(H) x 56(D) mm.

Two possibilities for digital installation: 3 wires+coaxial cable or 4 wires+twisted pair (it is required to use a EL560 twisted pair video transmitter).

Models "Pack Code" with coded panel:

Illuminated keypad and 2 x 16 bias lighted LCD display.

Management of up to 255,000 monitors or telephones.

Easy system programming through the keypad or using a computer.

Selectable language.

Programmable lock release activation time between 0 and 99 seconds.

Two calling methods: direct entry of the apartment code or by searching the tenant name in the repertory.

Four codes access control of 4 digits each. The third code can be temporaly disabled.

Power supply and 12Vd.c. lock release are included.

Monitors and / or telephones are not included in the packs. Use Platea Uno (pag. 71) or Platea Plus (pag. 72) monitors and T-740 Uno (pag. 63), T-940 Uno or T-940 Plus (pag. 67) telephones. It is possible to use up to 3 units in the same apartment without additional power supplies

Door panel accessories are detailed on pages 24 and 25.

Schematic diagrams and sections chart are shown on pages 102 to 105.



5131

3 ways b/w video pack composed of:

11785131

- ▲ 1131/AL three push buttons grille module. p. 45
- EL530 sound module with b/w camera. p. 57
- EL500 microprocessed module. p. 58
- 600/AL closing heads. p. 49
- CE615 embedding box. p. 50
- FA-Plus/C power supply. p. 59
- CV-14/DC lock release. p. 79



5140

4 ways b/w video pack composed of:

11785140

- ▲ 1140/AL four push buttons grille module. p. 45
- EL530 sound module with b/w camera. p. 57
- EL500 microprocessed module. p. 58
- 600/AL closing heads. p. 49
- CE615 embedding box. p. 50
- FA-Plus/C power supply. p. 59
- CV-14/DC lock release. p. 79

For Buildings

With Stadio Plus panel



5150

5 ways b/w video pack composed of:

11785150

- ▲ 1150/AL five push buttons grille module. p. 45
- EL530 sound module with b/w camera. p. 57
- EL500 microprocessed module. p. 58
- 600/AL closing heads. p. 49
- CE615 embedding box. p. 50
- FA-Plus/C power supply. p. 59
- CV-14/DC lock release. p. 79



5261

6 ways b/w video pack composed of:

11785261

- ▲ 1261/AL six push buttons grille module. p. 46
- EL530 sound module with b/w camera. p. 57
- EL500 microprocessed module. p. 58
- 600/AL closing heads. p. 49
- CE615 embedding box. p. 50
- FA-Plus/C power supply. p. 59
- CV-14/DC lock release. p. 79



5280

8 ways b/w video pack composed of:

11785280

- ▲ 1280/AL eight push buttons grille module. p. 46
- EL530 sound module with b/w camera. p. 57
- EL500 microprocessed module. p. 58
- 600/AL closing heads. p. 49
- CE615 embedding box. p. 50
- FA-Plus/C power supply. p. 59
- CV-14/DC lock release. p. 79



5210

10 ways b/w video pack composed of:

11785210

- ▲ 1210/AL ten push buttons grille module. p. 46
- EL530 sound module with b/w camera. p. 57
- EL500 microprocessed module. p. 58
- EL516 push buttons encoder module. p. 58
- 600/AL closing heads. p. 49
- CE615 embedding box. p. 50
- FA-Plus/C power supply. p. 59
- CV-14/DC lock release. p. 79

For Buildings

With Stadio Plus panel



5403

B/W coded video pack composed of:

11785403

- ▲ Compact size video grille module with coded keypad. p. 57
- EL530 sound module with b/w camera. p. 49
- 600/AL closing heads. p. 50
- CE615 embedding box. p. 59
- FA-Plus power supply. p. 79
- CV-14/DC lock release.



5403/Color

Color coded video pack composed of:

11785404

- ▲ Compact size video grille module with coded keypad. p. 57
- EL531 sound module with color camera. p. 49
- 600/AL closing heads. p. 50
- CE615 embedding box. p. 59
- FA-Plus power supply. p. 79
- CV-14/DC lock release.



4403

Coded audio pack composed of:

11784403

- Compact size audio grille module with coded keypad. p. 57
- EL540 sound module. p. 49
- 600/AL closing heads. p. 50
- CE615 embedding box. p. 59
- FA-Plus power supply. p. 79
- CV-14/DC lock release.

Accessories

For any pack model



705/AL

Rain shield.

11280705

p. 51

805/AL

Surface box.

11280805

Dimensions: 150(W) x 240(H) x 61(D) mm.

p. 52



905/AL

45° surface box.

11280905

Requires SUP-EL500 bracket.

p. 53

Dimensions: 140(W) x 231(H) x 140(D) mm.

SUP-EL500

Bracket for 45° surface boxes.

11788950

p. 53



For Buildings

Accessories

For any pack model

**605/AL****Replacement frame.**

11280605

Covers the existing hole from larger panels.
Dimensions: 200(W) x 395(H) mm.

p. 54

For coded packs only

**3202/AL****Informative module.**

11783202

To show repertory codes, tenant names and instructions.
Includes embedding box and 600/AL closing heads.
Dimensions: 134(An) x 228(AL) mm.

725/AL**Rain shield.**

11280725

For compact size coded panels with 3202/AL module.

**875/AL****Surface box with integrated rain shield.**

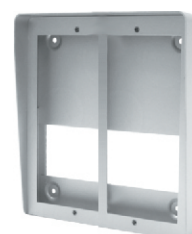
11280875

For compact size coded panels without 3202/AL module. p. 50
Does not use embedding box.
32 mm. depth only.

825/AL**Surface box with integrated rain shield.**

11280825

For compact size coded panels with 3202/AL module.
Does not use embedding box.
32 mm. depth only.

**885/AL****Surface box.**

11280885

N**Cannot be used with rain shield.**

p. 51

Do not use embedding box.
Several boxes can be horizontally linked.
32 mm. depth only.
Dimensions: 134(W) x 240(H) x 32(D) mm.
Available from 1st quarter 2006.