



T222ML

rev.0104

Audio
door entry system
Kits
2 wires installation

Rock Series

Instructions manual

INTRODUCTION

1

First of all we would like to thank and congratulate you for the purchase of this product manufactured by Golmar.

The commitment to reach the satisfaction of our customers is stated through the ISO-9001 certification and for the manufacturing of products like this one.

Its advanced technology and exacting quality control will do that customers and users enjoy with the legion of features this system offers. To obtain the maximum profit of these features and a properly wired installation, we kindly recommend you to expend a few minutes of your time to read this manual.

SYSTEM CHARACTERISTICS

- Audio system with 2 wires installation.
- Weatherproof (IP-44) and vandal resistant (IK-09) door panel.
- Just 1 TF-104 transformer (12Va.c., 1.5A).
- Electronic call with acoustic acknowledgement signal.
- a.c. lock releases activation.
- Telephone with call reception volume control and additional push button (T-922).

SYSTEM OPERATION

- To make a call the visitor should press the push button corresponding to the apartment he wishes to contact. An acoustic tone will be heard confirming the call as the push button is pressed. At this moment the call will be received at the telephone in the dwelling.
- To establish communication pick up the telephone handset.

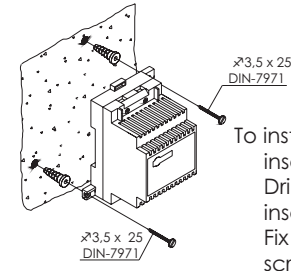
STARTING RECOMMENDATIONS

- Do not use excessive force when tightening the transformer connector screws.
- Install the equipment without the power connected. Disconnect from power before any system modification. Check that the input voltage is lower than 230Va.c.
- Before to connect the system, check the connections between door panel and telephones, and the transformer connection. Do always follow the enclosed

2

POWER SUPPLY INSTALLATION

Installing the TF-104 transformer.



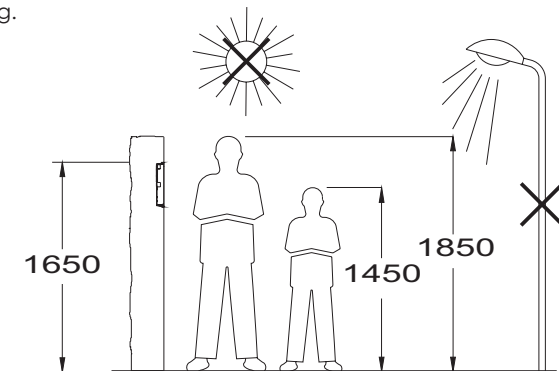
The transformer must be installed in a dry and protected place. It's recommended to protect the transformer by using a thermo-magnetic circuit breaker.

To install the transformer directly on the wall, insert the fixing flanges. Drill two holes of Ø6mm. and insert the wallplugs. Fix the transformer with the specified screws.

The transformer can be installed on a DIN guide (3 units) simply pressing it. To disassemble the transformer from the DIN guide, use a plain screwdriver to lever the flange as shown on the picture.

DOOR PANEL INSTALLATION

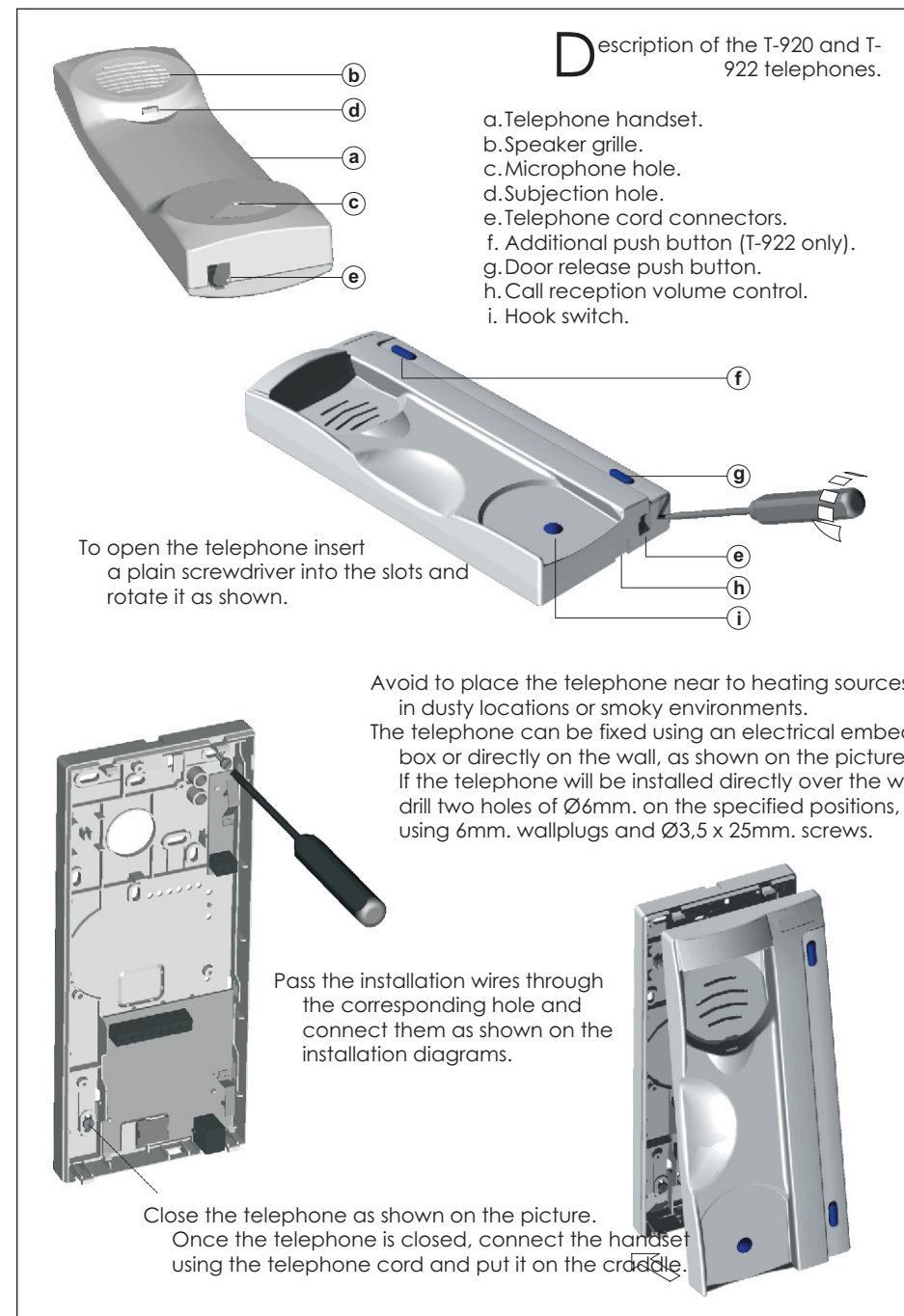
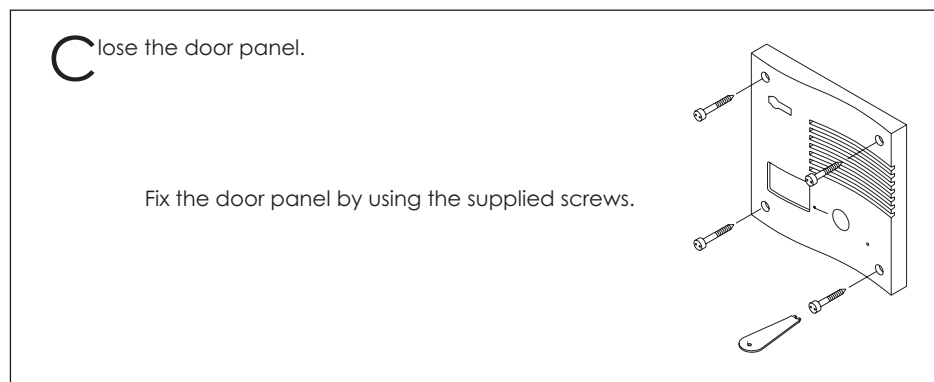
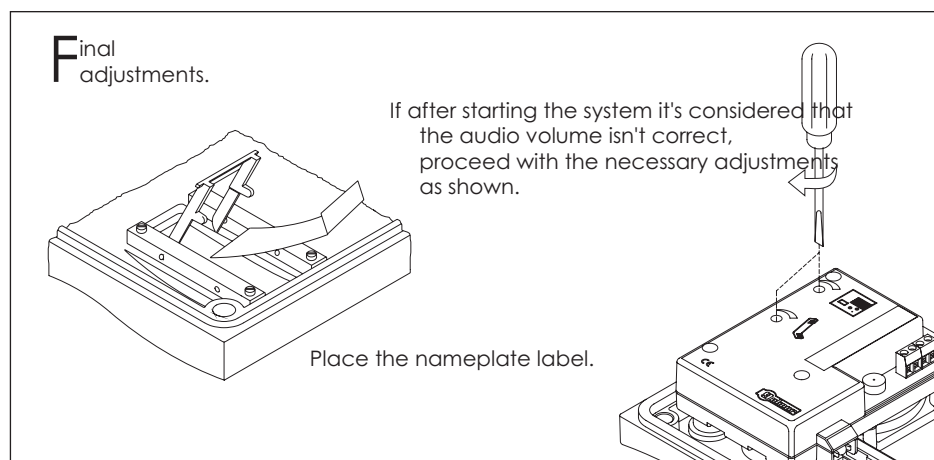
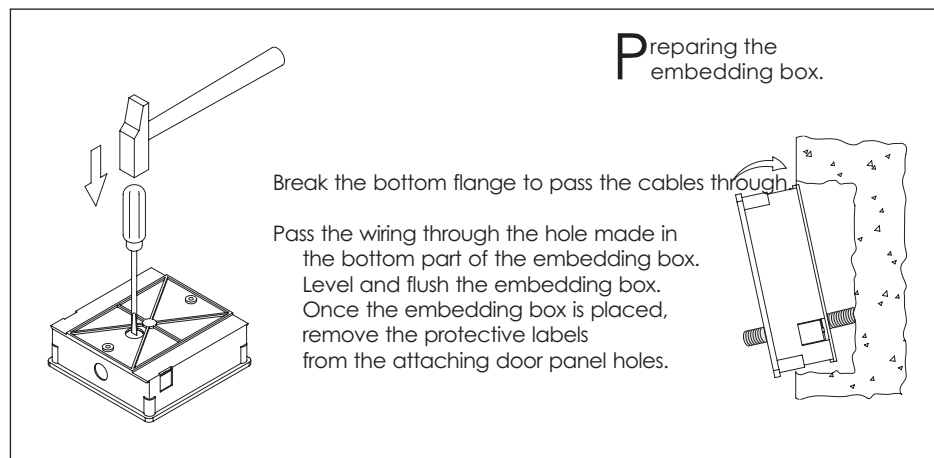
Embedding box positioning.

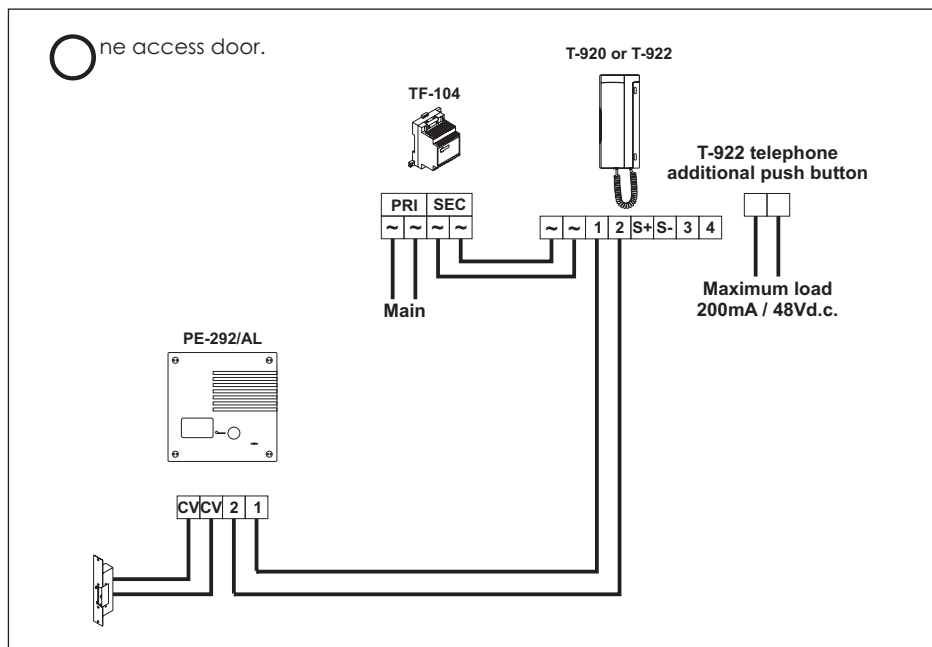


The upper part of the door panel should be placed at 1,65m. height roughly. The hole dimensions are:

131(An) x 131(AI) x 45(P) mm.

The door panel has been designed to be placed under most of the environmental conditions. However it's recommended to take additional cautions like rainproof covers.





Sections chart.

	Maximum distance
Terminal	100m.
~, ~, CV, 1, 2	1,00mm ²

TROUBLESHOOTING HINTS

- Nothing operates.
 - w Check the output transformer voltage between SEC terminals: it should have 12 to 17Va.c. If not, replace the transformer.
 - wSome of the installation wires are disconnected.
 - wIf only the door open function is working, wires connected to 1 and 2 terminals are inverted.
- Inappropriate audio level.
 - w Adjust the level volumes as shown on page 15. In case of feedback, reduce the audio levels until feedback fade out.
- The telephone continuously rings, there is no audio and the lock release cannot be activated.