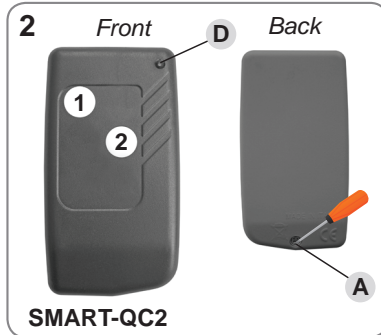
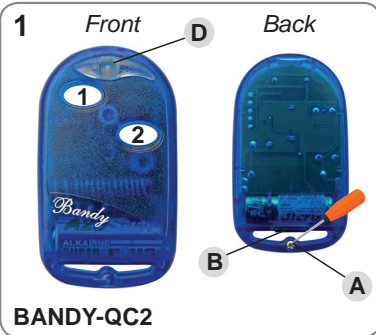


BANDY-QC2

SMART-QC2



GB Remote Control

WARNING! At the first usage, do the self-generating code.

► BATTERY AND OPENING OF THE REMOTE CONTROL [1-2]

Open the case with a screwdriver removing fixing screw **A**, and with a flat head screwdriver lever the box open by inserting it in the slit **B** (BANDY). **When the battery is replaced, check the polarity. Keep the battery away from children. Dispose of the old battery in the correct manner and according to your local regulations.**

► QUARTZ INSERT AND ADJUSTMENT OF THE FREQUENCY [3-4]

In the right socket, insert the choosen quartz **E**. Put the frequency adjuster **I** in line with the antenna of the remote control **L**. Press one of the buttons and keep it pressed whilst turning the potentiometer **H** slowly with a ceramic screwdriver until the adjuster's light is at the brightest. Now the frequency of the remote control is adjusted to that of the choosen quartz.

► CODE GENERATION [1-2]

The first button of remote control will already have a code assigned (created by NOLOGO during testing) and the second button has no code assigned. This operation creates new codes for both buttons and cancels the previous codes.

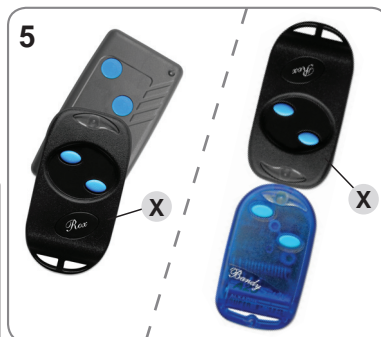
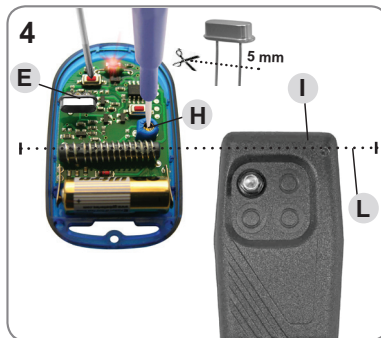
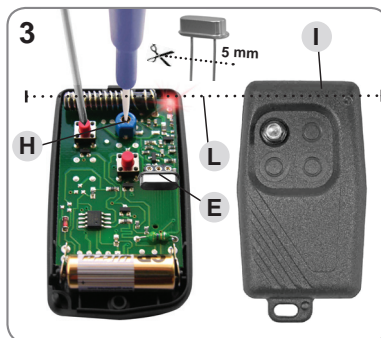
- Press button no. **1** and then button no. **2** and keep them pressed.
- The light **D** flashes slowly.
- Wait 8 seconds until the light is flashing faster.
- Let go of button no. **1** and after a moment button no. **2**

Now every button has a generated code from millions of different combinations.

► HOW TO LEARN A CODE [1-2-5]

- Press button no. **1** and then button no. **2** and keep them pressed.
- The light **D** starts flashing
- Release the button which is not to be copied on to.
- Press the original transmitter's button **L** which you want to copy.
- Keep the two remote controls close to each other as shown in picture no. **5**, so that the antenna of the original remote control **X**, usually in the bottom part of the remote control (check it by opening the remote control) should be as near as possible to the receiving part **F** of the Remote Control.

The light **D** flashes rapidly for a while and then it flashes regularly to confirm that the code has been copied.



Delton

1095 Budapest, Mester utca 34. Tel.: *218-5542, 215-9771, 215-7550, 216-7017, 216-7018 Fax: 218-5542
1141 Budapest, Fogarasi út 77. Tel.: *220-7940, 220-7814, 220-7959, 220-8881, 364-3428 Fax: 220-7940
Mobil: 30 940-1970, 20 949-2688 Mobil: 30 531-5454, 30 959-0930

E-mail: delton@delton.hu Web: www.delton.hu

www.delton.hu