



T805ML

rev.0204

Video Kit
5 wires installation
without coax

Rock Series

Instructions manual

INTRODUCTION

2

First of all we would like to thank and congratulate you for the purchase of this product manufactured by Golmar.

The commitment to reach the satisfaction of our customers is stated through the ISO-9001 certification and for the manufacturing of products like this one.

Its advanced technology and exacting quality control will do that customers and users enjoy with the legion of features this system offers. To obtain the maximum profit of these features and a properly wired installation, we kindly recommend you to expend a few minutes of your time to read this manual.

SYSTEM CHARACTERISTICS

- Video system with 5 wires installation (without coaxial cable).
- Weatherproof (IP-44) and vandal resistant (IK-09) door panel.
- Electronic call with acoustic acknowledgement signal.
- Autoswitch-on function (it requires one extra wire on the installation).
- Potential free contact push buttons to activate auxiliary devices.
- a.c. lock releases activation.
- Two additional telephones can be placed in parallel (T-901 and T-901VD models).

SYSTEM OPERATION

- To make a call the visitor should press the push button corresponding to the apartment he wishes to contact. An acoustic tone will be heard confirming the call is in progress once the push button has been pressed. At this moment the call will be received at the monitor (telephone) in the dwelling and the picture will appear on the monitor without the visitor being aware of this.
- To establish communication pick up the monitor (telephone) handset. The communication will last for one and a half minutes: if the handset is replaced before, the picture will remain on the screen till the end of this time.
- To open the door, press the door release push button.
- To see the picture from the door panel, without being called first, press the autoswitch-on push button. Pick up the handset and press the autoswitch-on push

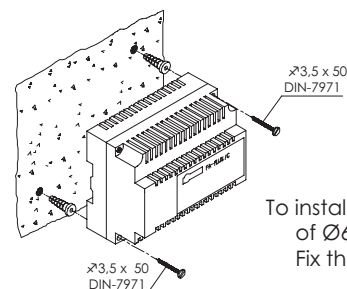
STARTING RECOMMENDATIONS

- Do not use excessive force when tightening the power supply connector screws.
- Install the equipment with the power disconnected. Disconnect from power before any system modification.
- Before to connect the system, check the connections between door panel,

3

POWER SUPPLY INSTALLATION

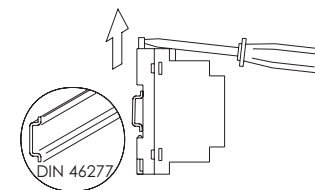
Installing the FA-805 power supply.



The power supply must be installed in a dry and protected place. It's recommended to protect the power supply by using a thermo-magnetic circuit breaker and to use a ground connection.

To install the power supply directly on the wall, drill two holes of Ø6mm. and insert the wallplugs. Fix the transformer with the specified screws.

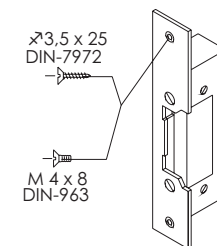
The power supply can be installed on a DIN 46277 (7 units) guide simply pressing it. To disassemble the power supply from the DIN guide, use a plain screwdriver to lever the flange as shown on the picture.



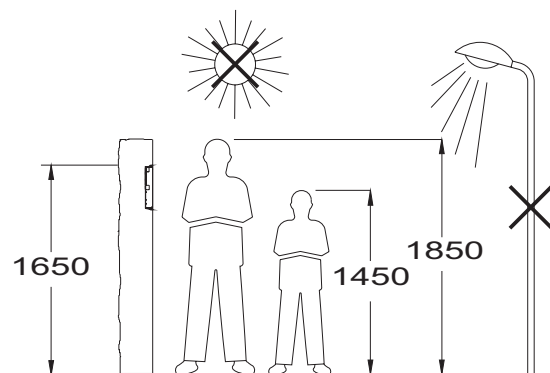
LOCK RELEASE INSTALLATION

Lock release installation.

If the lock release will be installed in a metal door, use a Ø3.5mm. drill and tap the hole. In case of wood door, use a Ø3mm. drill.

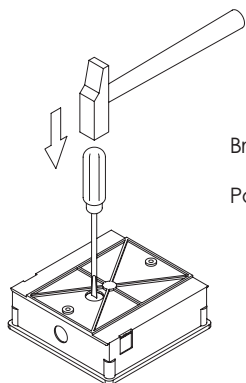


IMPORTANT: the lock release to be used must be 12Va.c.

Embedding box positioning.

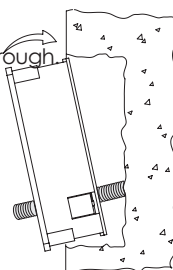
The upper part of the door panel should be placed at 1,65m. height roughly.
The hole dimensions are: 131(W) x 131(A) x 45(D) mm.

The door panel has been designed to be placed under most of the environmental conditions.
However it's recommended to take additional cautions like rainproof covers. To obtain a good quality picture on video door entry systems, avoid direct incidence from light sources.

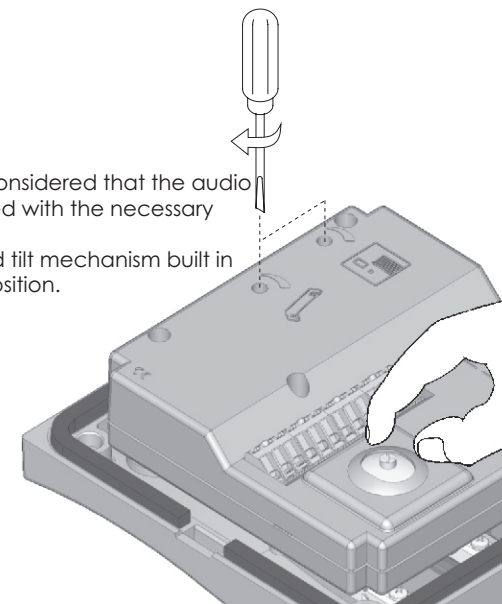
Preparing the embedding box.

Break the bottom flange to pass the cables through.

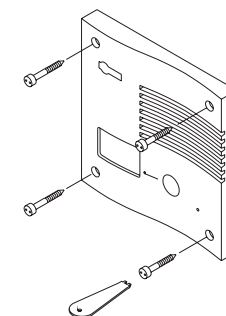
Pass the wiring through the hole made in the bottom part of the embedding box.
Level and flush the embedding box.
Once the embedding box is placed, remove the protective labels from the attaching door panel holes.

**F**inal adjustments.

If after starting the system it's considered that the audio volume isn't correct, proceed with the necessary adjustments as shown.
The telecamera has a pan and tilt mechanism built in to adjust the telecamera position.

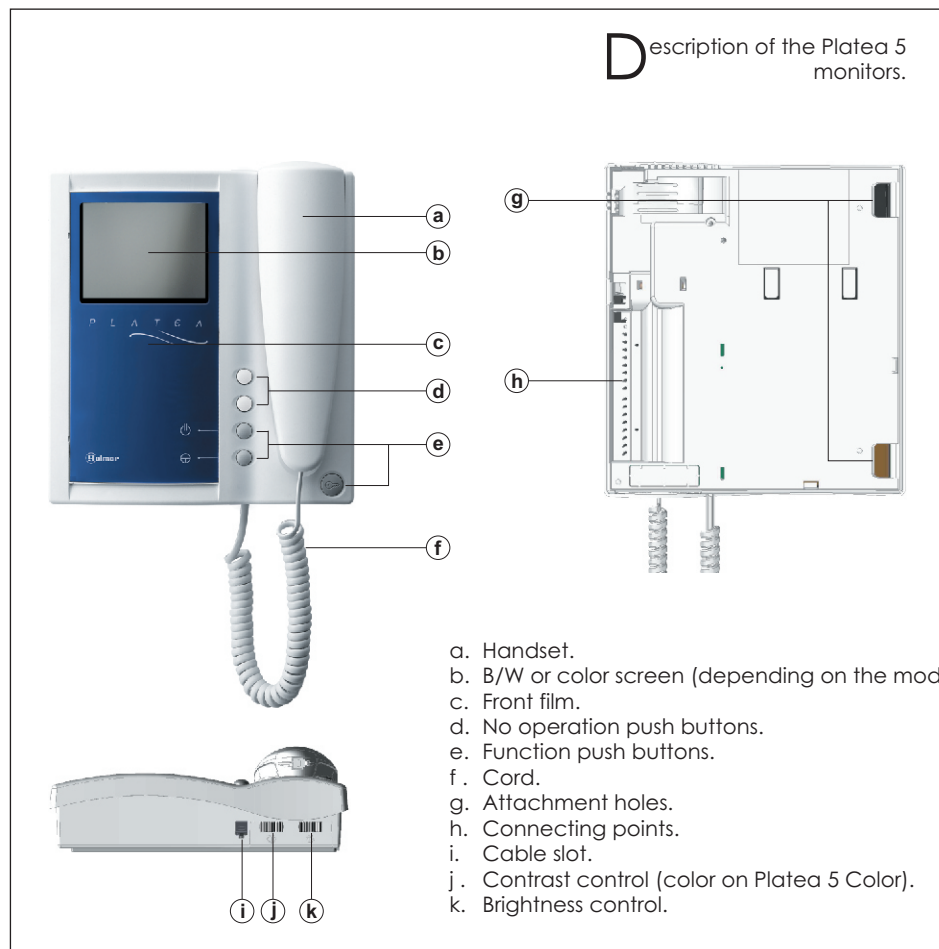
**C**lose the door panel.

Fix the door panel by using the supplied screws.



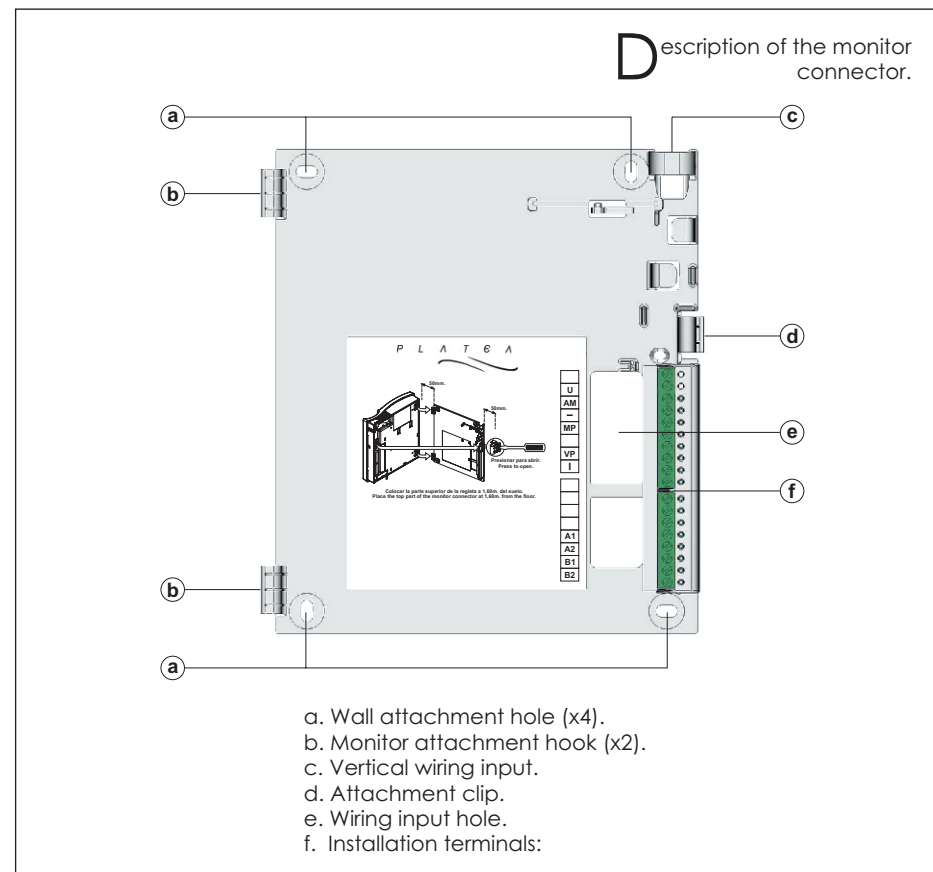
MONITOR DESCRIPTION

6



7

MONITOR CONNECTOR DESCRIPTION



MONITOR INSTALLATION

Function push buttons.



Allows the activation of an auxiliary device (see page 34).



If the handset is on the cradle allows to see the picture from the panel camera.
If not, allows to establish audio and video communication with the door panel.
This function will last for one and a half minutes.
The activation of this function requires one extra wire.

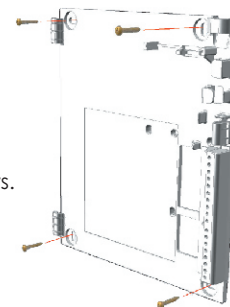


Allows to activate the lock release.

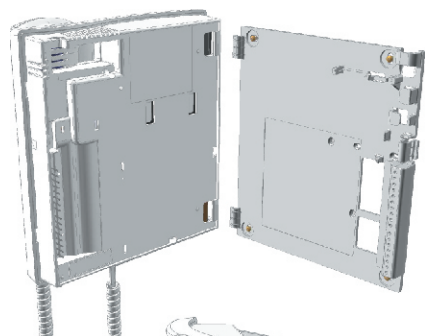
Fix the monitor connector to the wall.

Avoid to place the monitor near to heating sources, in dusty locations or smoky environments.
To install the monitor directly over the wall, drill two holes of Ø6mm. and use the supplied screws.

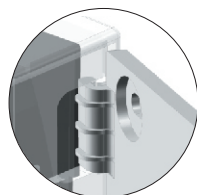
The upper part of the monitor connector must be placed at 1,60m. height roughly. The minimum distance between the monitor connector and the closest object must be 5cm.



Fix the monitor.



Place the monitor at right angles to the connector and align the attaching holes of the monitor with the attachment hooks of the connector, as it is shown on the drawing.



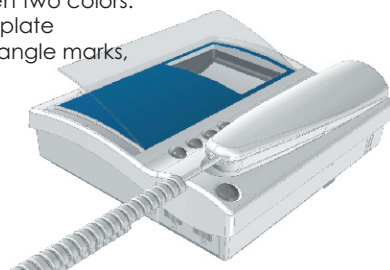
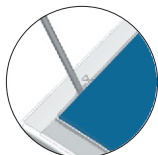
Lock out the monitor. Press the right side till the attachment clip locks the monitor firmly.

To disassemble the monitor from the connector, use a plain screwdriver to release the attachment clip. Remove the monitor from the connector, with special attention do not falls.



Changing the front film.

The monitor is supplied with a reversible front film, that allow the owner to choose between two colors. To change the front film, remove the front plate by inserting a plain screwdriver in the triangle marks, as it is shown on the drawing.

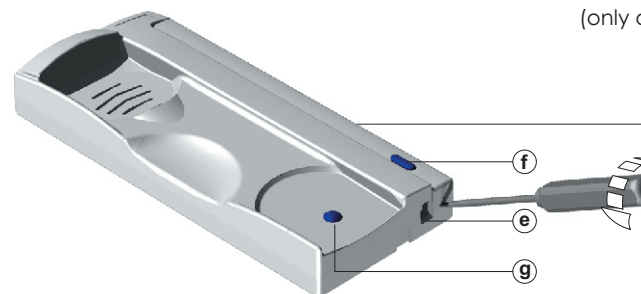


Description of the T-901 and T-901VD telephones.

- a. Telephone handset.
- b. Speaker grille.
- c. Microphone hole.
- d. Subjection hole.
- e. Telephone cord connectors.
- f. Door release push button.
- g. Hook switch.



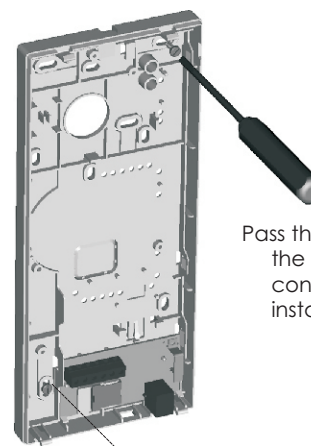
On-Off and call volume regulator (only on T-901VD telephone).



To open the telephone insert a plain screwdriver into the slots and rotate it as shown.

Avoid to place the telephone near to heating sources, in dusty locations or smoky environments.

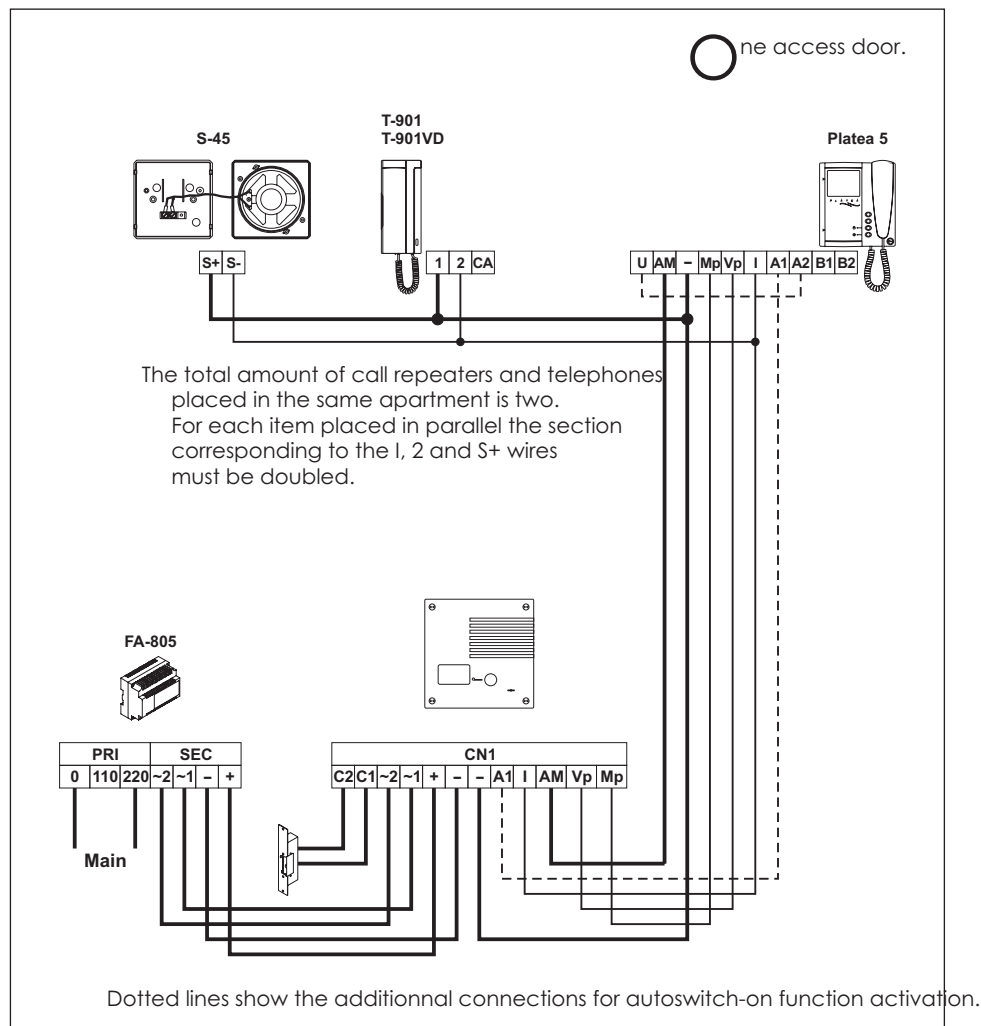
The telephone can be fixed using an electrical embedding box or directly on the wall, as shown on the picture. If the telephone will be installed directly over the wall, drill two holes of Ø6mm. on the specified positions, using 6mm. wallplugs and Ø3,5 x 25mm. screws.



Pass the installation wires through the corresponding hole and connect them as shown on the installation diagrams.

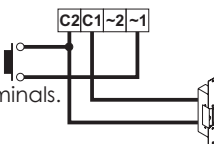
Close the telephone as shown on the picture. Once the telephone is closed, connect the handset using the telephone cord and put it on the cradle.





Lock release activation using an external push button.

The lock release can be activated at any moment by using an external push button, that must be connected between 'C2' and '~1' terminals. This function will allow to exit from the building being not necessary the use of a key.



Sections chart.

Power supply / Panel / Lock release	Distance	
	50m.	100m.
-, +	1,50mm ²	2,50mm ²
~1, ~2, C1, C2	1,00mm ²	1,50mm ²

Door panel / Monitor	Distance		
	50m.	100m.	200m.
I	0,25mm ²	0,50mm ²	1,00mm ²
-, AM	1,00mm ²	1,50mm ²	2,50mm ²
Vp, Mp, A1	0,25mm ²	0,25mm ²	0,25mm ² *

* For longer distances than 100m., Vp and Mp video wires must be twisted.

Auxiliary devices activation.

Platea 5 monitors have two potential free contact push buttons (⏏ and ⊕) to activate auxiliary devices. If autoswitch-on function has been installed, it will be only possible to use ⏏ push button (terminals B1 and B2) to activate one auxiliary device. The maximum load to be applied to one of these push buttons is 200mA/50Vd.c. However, it's recommended the use of R-3 unit relays and one TF-104 transformer. Usual applications are the activation of stairs light, second lock release, ...

